

**DuraPost**<sup>®</sup>  
BY BIRKDALE

**URBAN COMPOSITE PANEL**  
**FUSS-FREE FENCING**

  
[durapost.co.uk](http://durapost.co.uk)

GUARANTEED  
UP TO

**15**  
YEARS

Brown Urban Panel with Sepia Brown Rails  
Horizontal

Grey Urban Panel with Anthracite Grey Rails  
Horizontal

# GREAT WHICHEVER WAY YOU LOOK AT IT.

Urban Slatted Panels offer great flexibility in design, with their unrivaled authentic timber grain finishes in a choice of three stylish colours, that will never need painting! They can be installed vertically, or horizontally – ideal in a smaller garden where the eye is led along a linear vanishing point to build the impression of space.

Urban boundaries deserve sharp design and cutting-edge materials. With increasing social awareness amongst home-owners, they also need to be long-lasting, environmentally friendly, and low maintenance. The new Urban Composite Slatted Panels from DuraPost® tick all the boxes.

Available in a range of colours and made from a blend of rice husk and recycled HDPE, these panels, consisting of 6 boards and 2 horizontal u-shaped rails, are environmentally conscious and sustainable future-proof examples of DuraPost's culture of innovation.

## WHY CHOOSE DURAPOST URBAN?

- Available in 3 stylish colours
- Can be orientated vertically or horizontally
- Low - No maintenance
- Guaranteed for up to 15-years
- Mould and rot-resistant
- UV stabilised
- Eco-friendly (made from 60-70% recycled content)
- Easy to install



# DETAILS OF WHAT YOU WILL NEED

## AVAILABLE PANEL COLOURS



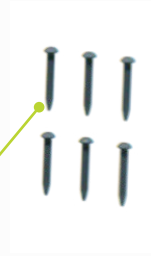
### Anthracite Grey Urban Rails

Each pack contains two horizontal u-shaped rails, one for the bottom edge of the panel and one for the top.



### Grey DuraPost® Urban Composite Slats

Sold in packs of two boards, 3 packs contains all you'll need to build a full 1.8m (6ft) fence panel.



Our screws come in the 3 original DuraPost colours.

### Colour-match Pan-head screws

We offer colour matching pan-head screws, to go with every colour in the DuraPost® Range

## COMPLETE THE LOOK



### Anthracite Grey Classic DuraPost®

The Classic DuraPost® provides style and stability to fencing projects. They can withstand the elements too and have been wind tested in speeds of up to 110mph.



### Anthracite Grey Cover Strips

Designed to improve the aesthetics on the fixing side of the post and can be added on afterwards to any DuraPost® project.



### Anthracite Grey Post Cap

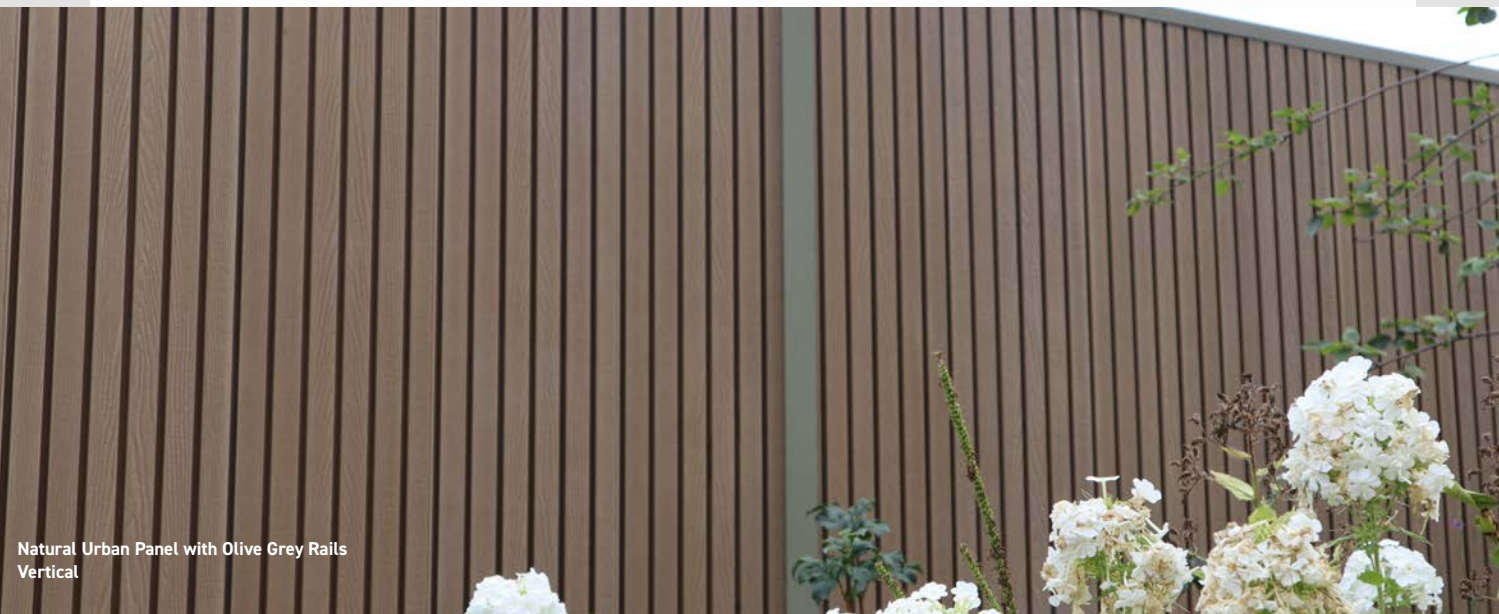
The cherry on the cake. DuraPost® Anthracite Grey Post Caps look smart while helping to protect the post they're on.

## FINISHES

ANTHRACITE GREY

OLIVE GREY

SEPIA BROWN



Natural Urban Panel with Olive Grey Rails Vertical



Natural Urban Panel with Anthracite Grey Rails Vertical

## WHY CHOOSE URBAN?

SUSTAINABLE AND MAINTENANCE-FREE URBAN SLATTED PANELS FROM DURAPOST® WORK VERTICALLY OR HORIZONTALLY.



6ft fence panel (1.8m)

3 x pack Urban Boards

1 x pack Urban Rails

1 x Classic DuraPost®

### ADJUSTABLE PANEL

Our Urban boards can be used in either orientation (horizontal or vertical) and can be easily cut down to any height or width.

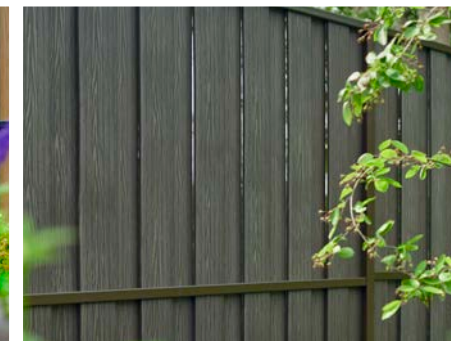
Grey Urban Panel with Anthracite Grey Rails  
Horizontal

## NOT SURE ABOUT URBAN, BUT ARE SURE ABOUT COMPOSITE FENCING

NOT TO WORRY, THE DURAPOST® URBAN PANEL IS PART OF OUR DURAPOST® COMPOSITE RANGE, SO EVEN IF URBAN ISN'T RIGHT FOR YOU, WE MAY HAVE SOMETHING THAT IS!

### DuraPost® Vento

With a 'hit-and-miss' design Vento Panels product a beautifully symmetrical finish to both sides of the fence. Vento is the ideal fence to install in breezy locations as the hit-and-miss style provide small gaps for wind to blow through whilst still ensuring total privacy. DuraPost Vento Panels are a composite material made of recycled HDPE and rich husks.



### DuraPost® Prima

For a traditional, hard-wearing garden fence DuraPost Prima Gravel Boards are designed as easy to install tongue-and-groove units which stack tightly and neatly one on top of another. Prima Gravel Boards are manufactured from unplasticised Poly Vinyl Chloride (PVCu) – the fact they have not been plasticised during the production process means they maintain their rigidity and strength.

